

The height of the ink jet is about 3 mm higher than before
Can print uneven material, concave and convex within 6 mm can be inkjet
The platform can be raised and lowered,
and the thickness can be adjusted freely

UV 6060



MAIN PARTS DISPLAY





12-COLOR CHANNEL INK TUBE

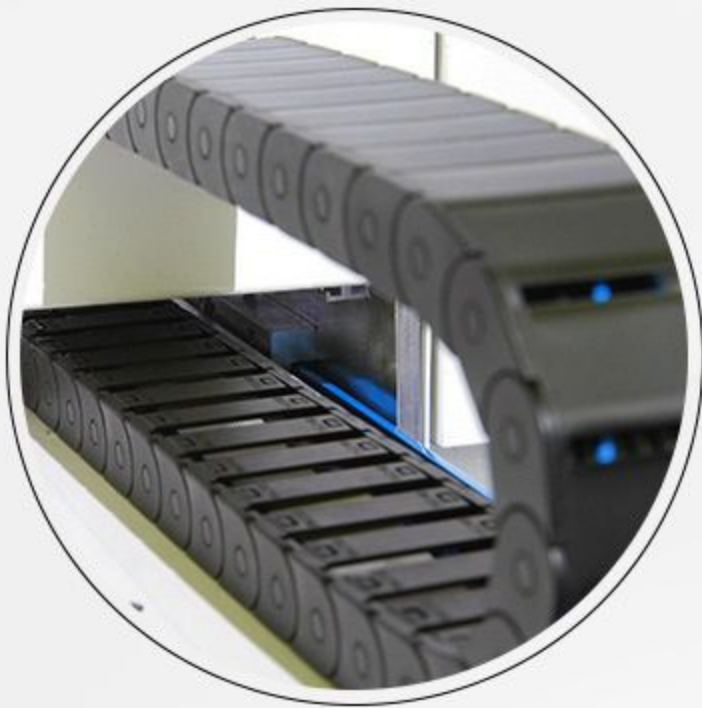
12 Color Channel Ink Tube, large ink tube directly for ink more smooth, no broken line, more vivid color, color firm higher

03

Y SHAFT ROD+ SQUARE SLIDER

Y Axis screw, to ensure the repeated printing without dislocation, only print the position of the print, do not play the position is not empty.





HIGH PERFORMANCE DRAG CHAIN

Suitable for high-speed Movement, high-quality drag chain can greatly reduce wire rod wear and prolong wire rod life, reduce drag chain noise

04

INFRARED AUTOMATIC ALTIMETRY

Infrared automatic detection of height, and automatic adjustment to prevent damage to the nozzle, the maximum thickness of 23 cm





CLEANING UNIT

One-button cleaning nozzle to prevent nozzle clogging, no waste ink clear zero, automatic extraction waste ink. Peristaltic Suction Pad, effective prevention of obstruction

05

BUILT-IN FAN WATER COOLER

The built-in fan + two water-cooled boxes are cooled in three cycles, mainly for UV lamps and internal machine cooling to ensure long-term use.



Model	6060	Print sprinkler	XP600 Dual shower, triple shower optional
Print accuracy	4PASS、8PASS、16PASS、32PASS	Printing platform	600* 600mm
Printing speed	8 pass; 3 ~ 5 M2/h	Selection software	Main Top Monthey, sharp color, NEOSTAMPA
printing height	0 ~ 230mm, infrared altimetry	Applicable system	Windows
Ink consumption	1 square meter / 20ml	Color configuration	6 groups of color+6 groups of white +6 groups of light oil(optional Polish)
Ink supply mode	continuous inking	Relief printing	Support
White ink output	white color output	Printing polish	Support
UV Lamp Life	3 years	Packing size	1440 * wide 1440 * High 980mm
UV lamp cooling	water cooling + air cooling	Equipment size	1300 * wide 1200 * High 720mm
UV lamp power	adjustable, up to 130W	net weight gross weight	135KG/190KG
Platform regulation	Touch screen + infrared altimetry	Outer packing	Export wooden cases(with forklift foot) + foam cotton
Platform drive	Imported Pulse servo motor drive	Voltage / plug	Wide voltage AC100~230V. Selected according to the country in which they are located
Print media	Mobile phone case / leather / lithogra- phy / crystal / acrylic card / CD / disc / nameplate, etc.	Nozzle protection	Intelligent Infrared Collision Prevention System + Peristaltic.Ink absorber cush- ion against blockage + maintenance fluid against blockage
Notes	The printer adopts stable platform technology, leading stepper motor drive mode, automatic in and out at the same time with infrared height measurement, laser positioning, water cooling + Air Cooling combi- nation. Wide Printing range of 230mm height products can be printed	Warranty	Three Years Warranty 【ink contact parts (or ink-damaged parts) no warranty, motherboard burn back to repair】